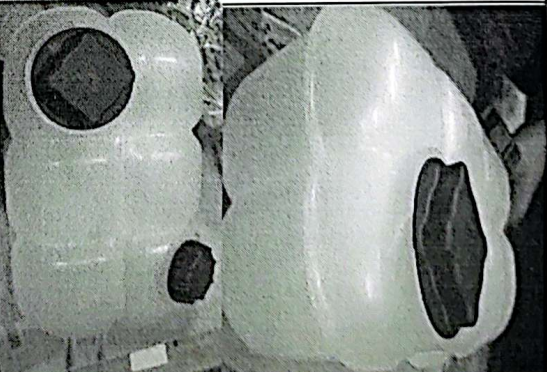



Damage Photo for CE1 Parts

No	Product Code	Trim	Product Name	Qty	Pprice	Total	Photo	Remark
1	17411510	17411510	Expansion Tank, Cooling System	1	140.63	140.63		<p>အပုံးနားမှ ပဲ့နေသောကြောင့် Damage ဖြုတ်ပစ်ပါမည်။ Coolant Level Sensor ကိုတော့ အဆင်ပြန်သွင်းပါမည်။ ကျုံးကျိတ်ကစင် သွင်း ဝါ လ၅၅၂။</p>

Prepared By 
S'part Admin
Zaw Myo

Checked By 
S'part DH
Aye Theingi Myint

Anknowledge By 
F&A Head
Moh Moh Khaing

Anknowledge By 
GM/OM
Min Thu Ya

Approved By 
GM(After Sale Division)
Aung Hein Win

18/13/2025.

Approved By 
COO(After Sale Division)
Aye Min Htoon

- ကျုံးကျိတ် sensor မှာပျက်စီးနေပါသည်။

Parts Service Diagnostics

Products SN: Profile

Part catalog Reman parts Standard parts General Foreword

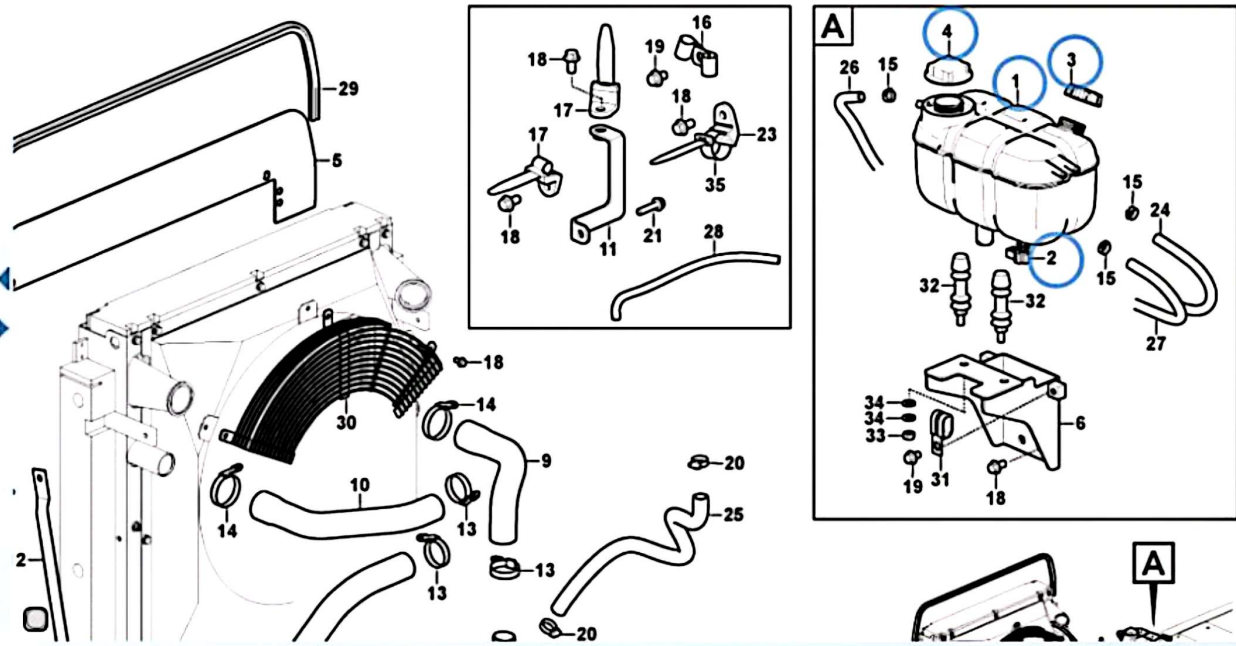
Basic Facts Order window New order 1 Add to order

Machine card Hose recipes Show in Parts Assembly instructions Mail OEM recipes

Excavators EC210B LC Volvo

20460 EC210B LC Volvo

- Tree search:
- IERAL
 - ENGINE WITH MOUNTING AN
 - ENGINE
 - LUBRICATING SYSTEM
 - FUEL SYSTEM
 - INLET SYSTEM; EXHAUST
 - COOLING SYSTEM
 - 261/100 Cooling system &
 - 261/110 Cooling system**
 - 261/300 Radiator 828612!
 - 261/320 Radiator 828698!
 - 262/100 Water pump and
 - 263/100 Belt transmission
 - 263/300 Cooling fan mou
 - SYSTEM; WARNING SYS
 - VER TRANSMISSION



Part	Descriptions	Q1	Q2	Q3	Q4	Q5	PS	Kit	STD	Option(s)	Remark
1	VOE17411510 Expansion tank	1									
	VOE17411509 •Expansion tank	1					CS				
2	VOE21271982 •Sensor	1									SE2603 COOLANT LEVEL
3	VOE3979593 •Filler cap	1									
4	VOE1674083 •Cap	1									

dle User: MA75674 English

Windows taskbar with icons for Start, Search, File Explorer, Microsoft Edge, Teams, Outlook, and other applications.